

95 +/- ACRES OF INDUSTRIAL LAND FOR SALE

501 WORTHAM HERMAN RD SW & 405 SIMPSON STREET SW CONOVER, NC 28603



AERIAL

HICKORY SPRINGS
Leggett & Platt
WEST PENN HARDWOODS, INC.
Profile
VANGUARD FURNITURE
ROLLEASE ACMEDA
CARGO

Workman St SW
(access rd)

Wortha Herman Rd
(access rd)

Solmaz St
(access rd)

GRABBER
CONSTRUCTION GROUP

INTERSTATE
40

SAC
AUCTIONS
A REAL ESTATE COMPANY

Fairgrove Church Rd SE

McDonald's

WAFEE HOUSE

DETAILS

SPECIFICATIONS

Price: \$3,300,000

Acres: 95 +/-

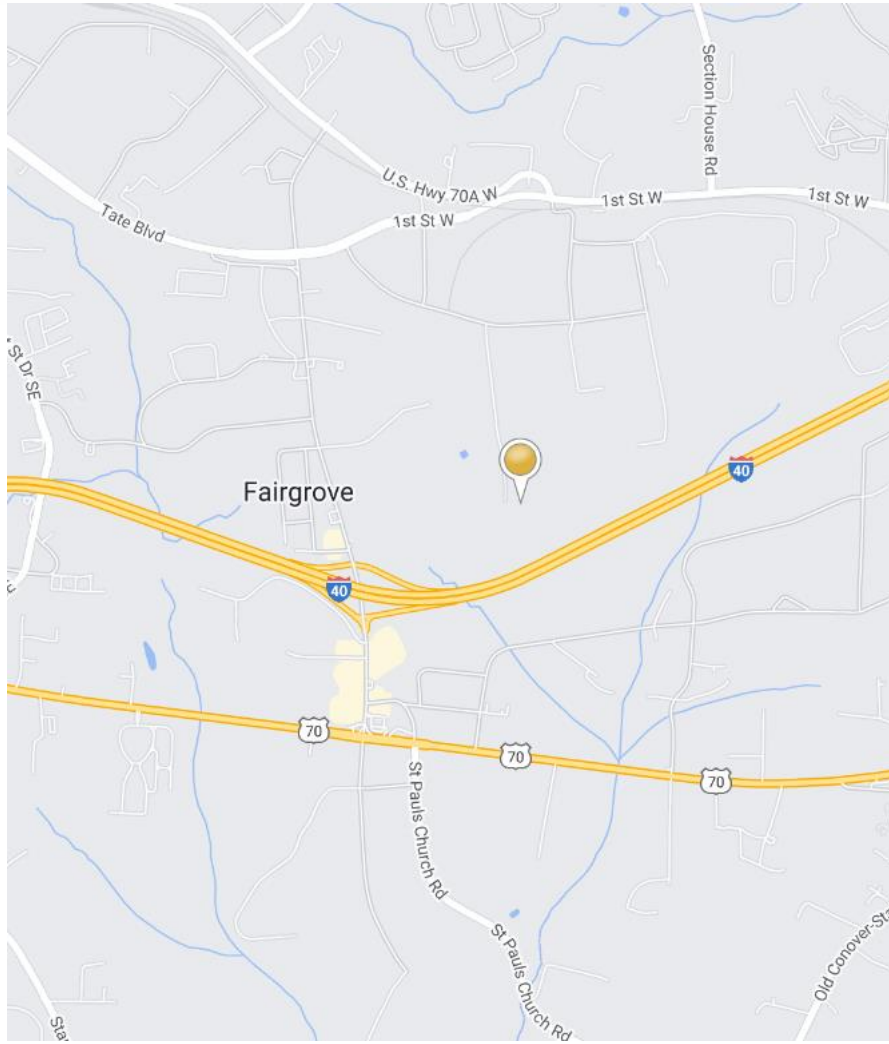
Topography: Rolling

Zoning: IND

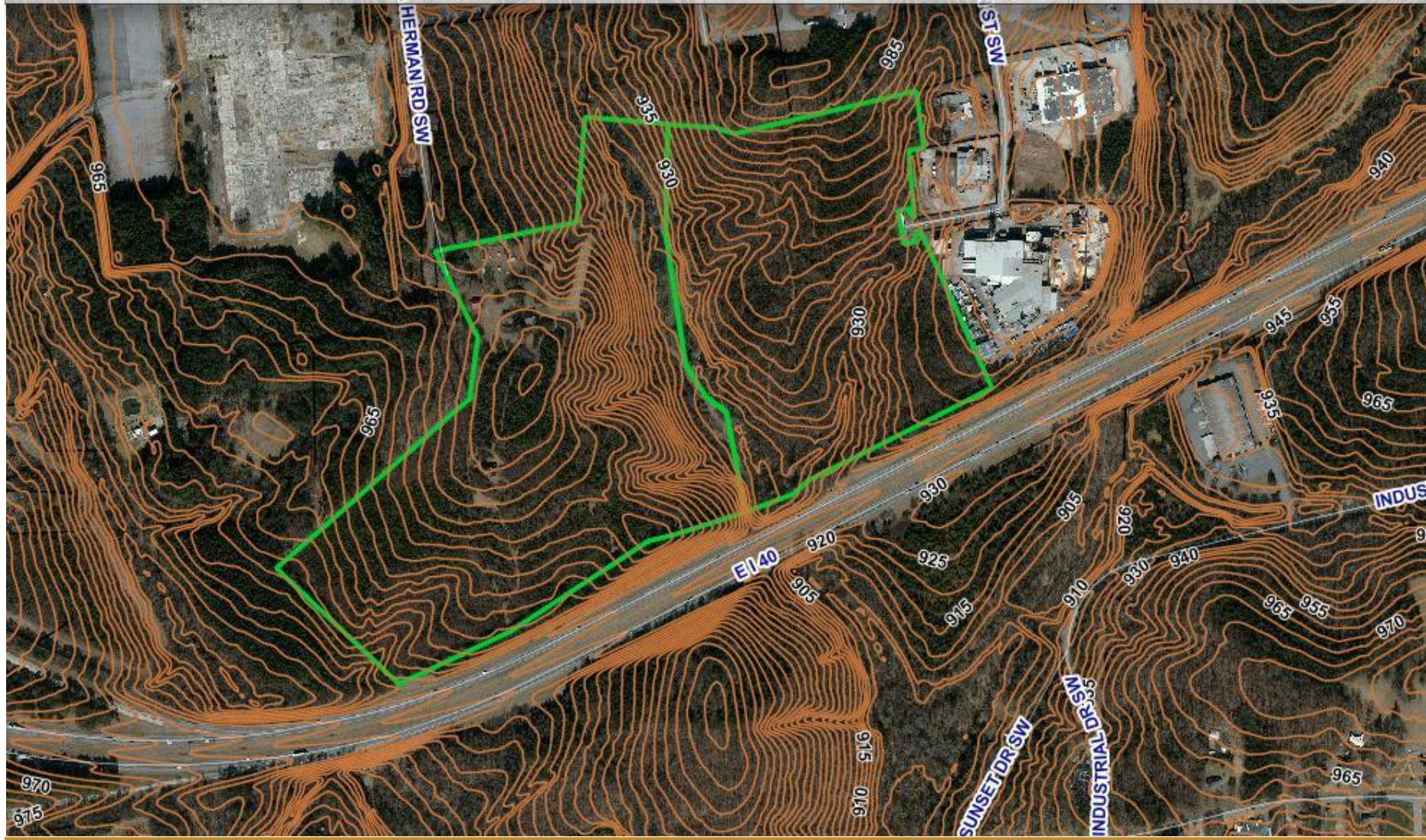
Two large parcels totaling approximately 95 +/- acres with Interstate 40 visibility and three points of access. Property is best suited for commercial development with zoning approval. Property can be accessed by Wortha Herman Rd. SW, Solmaz Street SW & Workman St. SW.

DEMOGRAPHICS

RADIUS	1 MILE	3 MILE	5 MILE
Total Population	7,281	36,777	72,484
Total Household	2,878	15,948	30,186
Median Household Income	\$47,164	\$57,096	\$65,226
Total Employees	11,305	39,206	52,803



5' CONTOURS





**FOR MORE
INFORMATION:**

Shana White
828.446.3404
shana@commercialfirst.net

3031 N Center St.
Hickory, NC 28601

www.commercialfirst.net