

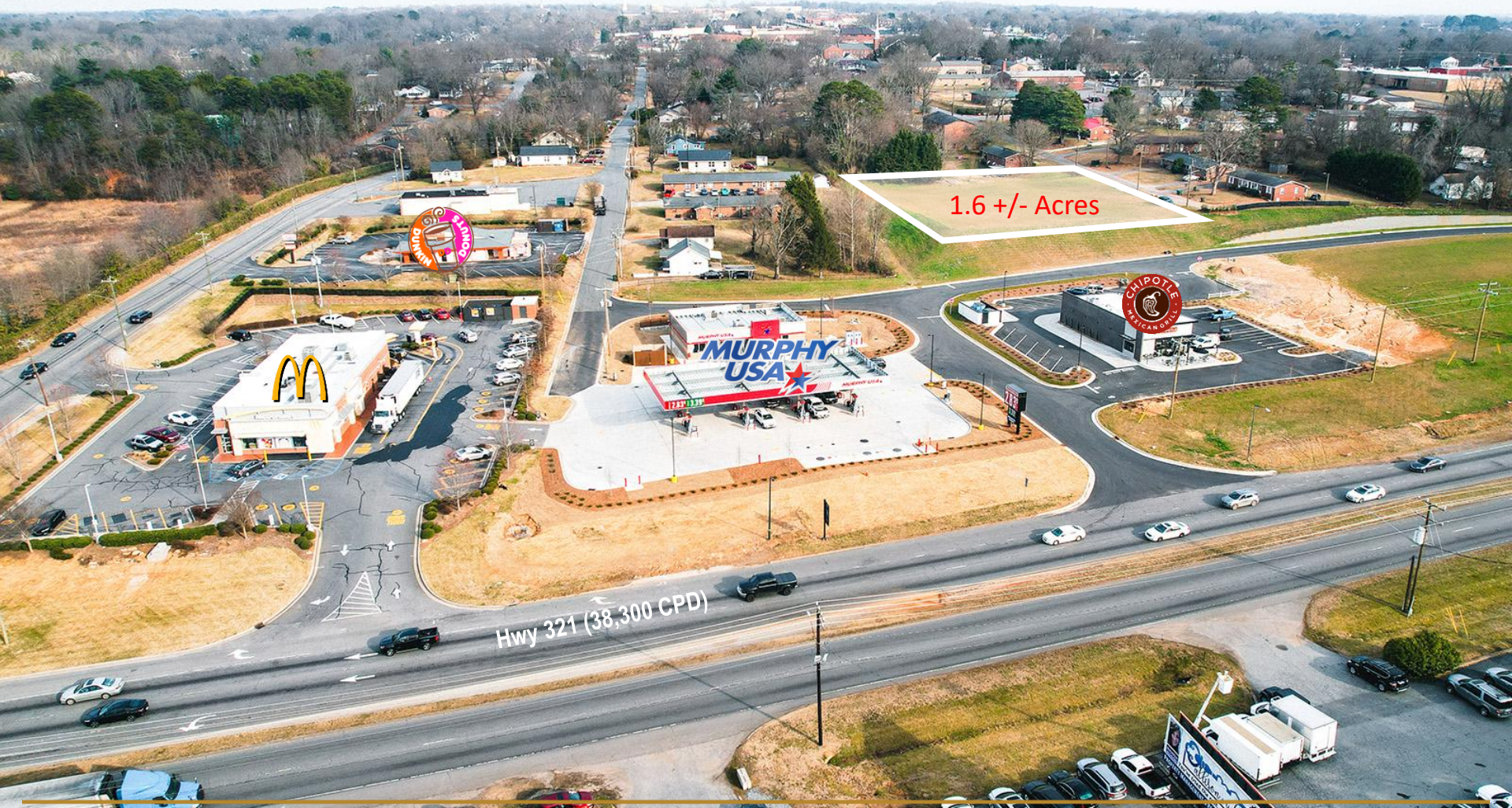
# LAND ON HWY 321

80 HWY 321 NW Hickory, NC 28601





# AERIAL





# DETAILS

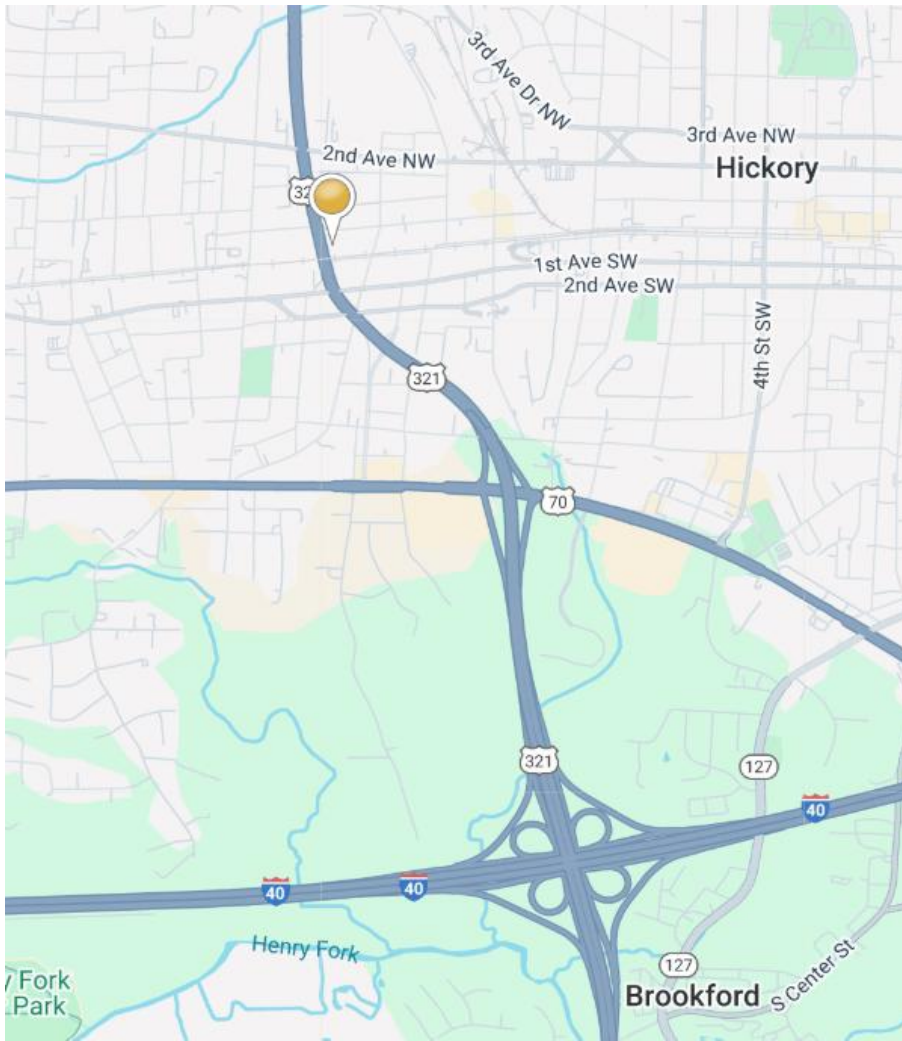
## SPECIFICATIONS

Price:	\$475,000
Acres:	1.62 +/- Acres
Zoning:	C-2

Whether you are looking to establish a new business, expand operations, build a QSR or invest in a highly desirable location, this parcel provides the perfect opportunity! It is suitable for a variety of commercial uses and provides Highway 321 visibility and accessibility, with easy access to Interstate 40.

## DEMOGRAPHICS

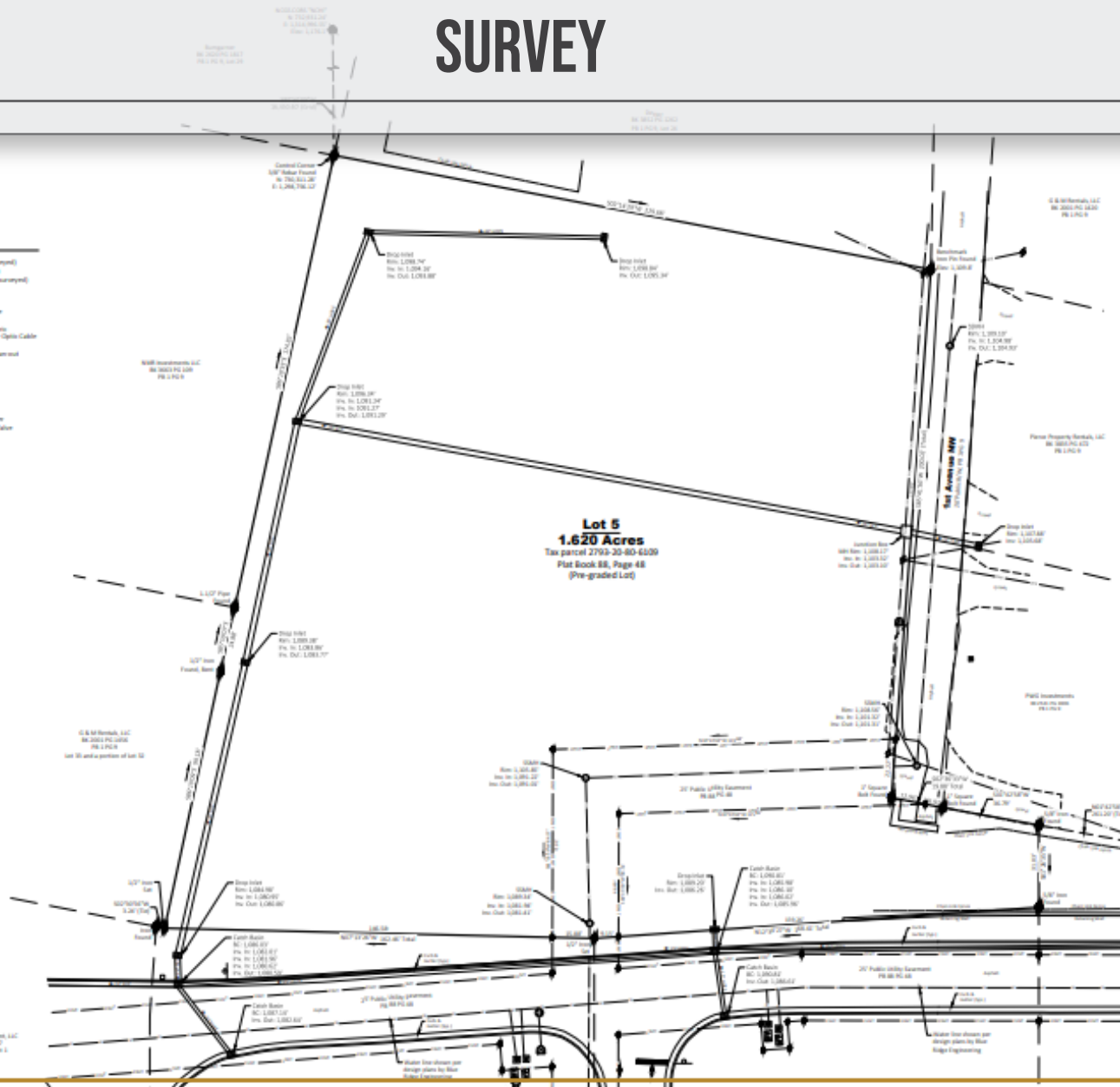
RADIUS	1 MILE	3 MILE	5 MILE
Total Population	5,849	31,011	68,323
Total Household	2,519	13,042	28,660
Median Household Income	\$51,652	\$62,810	\$68,342
Total Employees	8,310	32,897	47,974



# SURVEY



- LEGEND**
- Property Line (Surveyed)
  - The Line (Surveyed)
  - Adjunct Line (Not Surveyed)
  - Extension
  - Right of Way
  - Overhead Electric
  - Secondary Street Line
  - Gas Line
  - Underground Electric
  - Underground Fiber Optic Cable
  - Water Main
  - Secondary Street Cleanout
  - Utility Pole
  - Light Pole
  - Sign Support
  - Iron Pin
  - Compacted Point
  - Channel
  - Back Flow Preventer
  - Ingration Control Valve
  - Ferris Hydrant
  - Back/Side
  - Tree
  - Other Description







**FOR MORE  
INFORMATION:**

Shana White  
828.446.3404  
shana@commercialfirst.net

3031 N Center St.  
Hickory, NC 28601

[www.commercialfirst.net](http://www.commercialfirst.net)